

Letters to the Editors

Editors' note: The following letter was received about a year ago. Although answered at that time, it addresses a recurring theme and is reproduced here with a reply from the executive director.

You will understand my frustration at having earned the CIPE standing in the organization, only to be told that I would have to "recertify" it each year by earning 24 "approved REUs."

In the latest *ASPE Report*, Mr. Stan Wolfson rants and raves about the members' lack of participation as volunteers. "What's it going to take?" he asks, for more ASPE members to get involved and participate as volunteers. In my case, I might have been interested in maintaining my membership if I had been allowed to count one hour of volunteer work for the organization as one hour toward the 24 hours it takes each year for me to be recertified as CIPE.

I don't know how many CIPE/CPDs there are in the organization, but let's say they are 10% of the membership. If 750 CPDs put in 24 hours (minimum) of bona fide volunteer work, that's 18,000 hours, or 8.7 full-time man-years. Let's assume that each of the CPDs could talk someone else into helping. That could double the volunteer hours to more than 17 full-time man-years each year. I suppose, however, that since "approved REUs" generate income for the organization, that approach would not be very popular among those who determine such things.

I'm outta here. Please feel free to stop "all of the benefits and services enjoyed as a member of ASPE."

*Frank Stubbs, AIA
(formerly CIPE)*

Response

It's a misconception that you must earn "approved REUs" to maintain your Certified In Plumbing Engineering (CIPE) designation. As long as you received your CIPE designation before the April 2000 examination, you are permitted to retain the CIPE designation. There are no additional educational requirements. If you wish to be listed in the biennial directory, the renewal fee is \$25.

It appears that you have confused the CIPE program (now the Certified in Plumbing Design [CPD] program) with ASPE membership. No one has to be an ASPE member to take the CIPE examination, retain the CIPE, or maintain the CPD. The CIPE/CPD program is one of the benefits ASPE offers. The intent of the CIPE/CPD program is to provide a vehicle for recognizing and rewarding continuing education and professional development in the field of plumbing engineering. Having a CIPE or a CPD does not, at least not yet, allow you to stamp drawings.

ASPE created the CIPE and CPD programs to benefit the plumbing engineering community, not just its membership. Therefore, giving credits for ASPE volunteer work would be inappropriate unless we also gave credits for work in any other engineering-related organization.

Then why not, as many have asked, give credit for on-the-job time? The answer is that being on the job is not the same as maintaining a current understanding of the plumbing engineering profession or technological improvements in the profession and work environment. Some do not want to give up the old methods, the tried and true, the it's-always-worked mentality. Every year plumbing engineers retire or otherwise leave the profession because either the technology has grown beyond

their capabilities or there is no incentive to learn new ideas and technology.

You don't have to belong to ASPE or get CPD certification to continue your education. But by making the CPD commitment, you are recognizing the value of an incentive to active participation in continuing education and professional development.

You refer to an *ASPE Report* in which I "rant and rave" about lack of volunteer participation. I don't think "rant and rave" is exactly accurate, but the concern about having more member volunteers certainly is accurate. ASPE has 62 chapters, each of which requires an average of four members every year to become its officers and conduct the chapter's business. That's a minimum of 248 volunteers right there, about 3% of the membership.

The issue isn't simply to have volunteers. The real need is for more members to share their expertise with others—to serve on committees or help write chapters

of the *Data Book*, manuals on new and advanced techniques, and articles for publication in magazines. For each of these, you do in fact receive credits toward maintenance of the CPD. Neither the committee work nor the written material must be for ASPE, although it does need to be in the field of engineering.

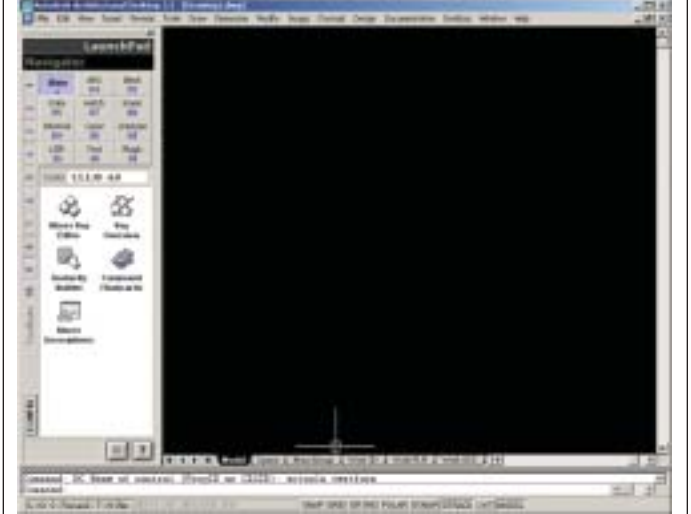
Continued on page 21

As long as you received your CIPE designation before the April 2000 examination, you are permitted to retain the CIPE designation.

Figure 3. The Key Overview Screen



Figure 4. LaunchPad as It Appears on Your Screen



accomplish this task. LaunchPad allows you to keep your eyes and crosshairs at the entity's location. You enter the two-key combination to display the Colors pad on the Navigator. Once the pad is visible, the macro set is redefined to handle all necessary editing commands. The software pads or enhanced dialogs are indexed based, so all you have to do is enter the index number of the desired command—in this case, the color number. Once the number is entered, the crosshairs go into Change Color mode. If you learn the key combinations, these operations become lightning fast, almost to the point an onlooker can't tell what is going on.

The \$29.95 price of the software may seem like the real deal, especially with a planned development environment to allow users to build their own compiled .DLL plug-ins. But I think the keypad's macros are what will pay for themselves in a very short time. You'll need the software to run the keypad hardware.

There is not enough space here to tell you everything this program and the accompanying keypad can do. You'll have to experience it for yourself. You will be able to produce drawings faster and with less effort. If you don't believe me, I'll race you!

Highly Recommended

LaunchPad street price: \$29.95

LaunchPad Navigator software: \$269.95
LaunchPad Accelerator keypad: Requires AutoCAD® 2000 or higher, Microsoft Windows® 98, ME, NT 4.0, 2000, or XP.
 Advanced Cad Productions, 480/949-8989, www.acLaunchPAD.com. ■



Mike Olson is an associate at Pearson Engineering Associates in Phoenix, AZ; ASPE Phoenix Chapter Vice President, Technical; and ASPE National Long-Range Planning Committee chair. He can be reached at mco-aspeped@cox.net.

Letters to the Editors *Continued from page 6*

After recently receiving my second notice and toying with retirement, I believe it best to advise the ASPE board I have decided to take "that step" and retire. I have placed a great deal of effort throughout the years in working with others to grow the society in California and Georgia. We started the golf tournaments in Los Angeles, San Diego, and Georgia. I think they are still working!

In Los Angeles, ASPE started in an engineering firm on Wilshire Boulevard. I was with Powers Regulator Co. then, and Don Dickerson, among others, was the driving force to get ASPE off the ground. I can "see" many others who attended, but like so many other things in my life, their names escape me. My membership number was 57. What is the number of the latest member? [Editors' note: The latest membership number is 23,581.]

I want you and others to know that, through the years of attending monthly meetings and participating in product shows, we have all grown intellectually. There are some pretty fine people in the industry. And many of them are in Georgia. However, my candidate is Pete Warshaw, the all-around ASPE ambassador. Just ask him and he is there! And he will do a good job, no matter what the topic. He might even make you laugh. Just a thought.

Thank you for your time, and good luck for continued growth.

Ellis F. Kindelon
 Marietta, GA

Send your letters to Letters to the Editors, Plumbing Systems & Design, ASPE, 8614 Catalpa Avenue, Suite 1007, Chicago, IL 60656; 773/695-9007 (fax); or pdelaney@aspe.org. ■